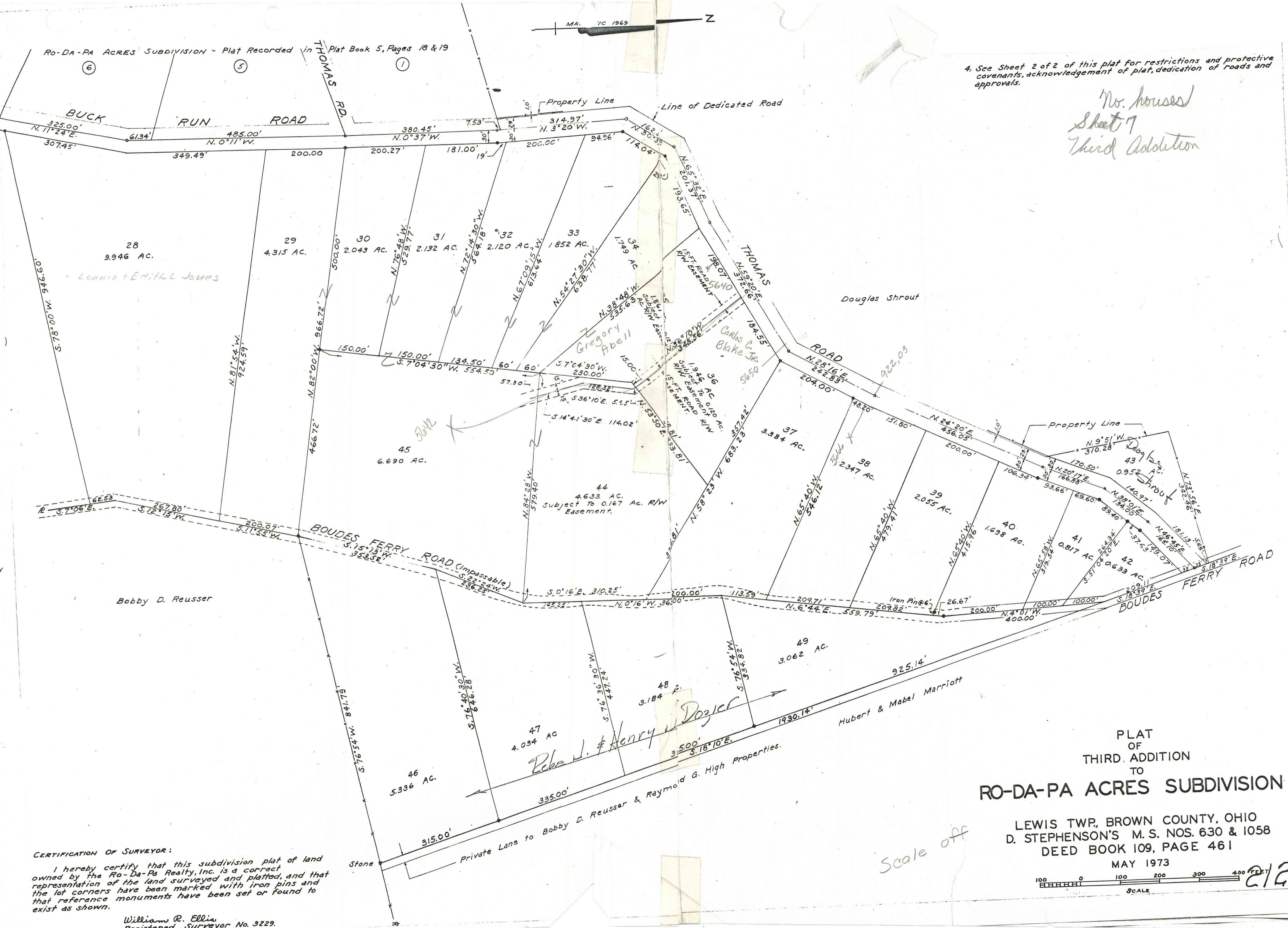


4. See Sheet 2 of 2 of this plat for restrictions and protective covenants, acknowledgement of plat, dedication of roads and approvals.

No. houses  
Sheet 7  
Third Addition

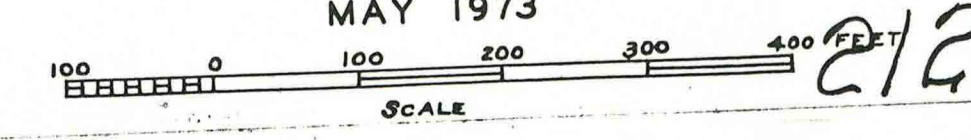


**CERTIFICATION OF SURVEYOR:**  
I hereby certify that this subdivision plat of land owned by the Ro-Da-Pa Realty, Inc. is a correct representation of the land surveyed and platted, and that the lot corners have been marked with iron pins and that reference monuments have been set or found to exist as shown.

William R. Ellis  
Registered Surveyor No. 3229.

PLAT  
OF  
THIRD ADDITION  
TO  
**RO-DA-PA ACRES SUBDIVISION**

LEWIS TWP, BROWN COUNTY, OHIO  
D. STEPHENSON'S M. S. NOS. 630 & 1058  
DEED BOOK 109, PAGE 461  
MAY 1973



Scale off